

THE JUNIOR LEAGUE OF EVANSVILLE, INC.

Strategic Plan 2016-2017

JLE MISSION

JLE is an organization of women committed to promoting voluntarism and developing the potential of women, and improving communities through the effective action and leadership of trained volunteers. Its purpose is exclusively educational and charitable.

COMMITMENT TO DIVERSITY AND INCLUSION

The Junior League welcomes all women who value our Mission. We are committed to inclusive environments of diverse individuals, organizations and communities.

VISION

JLE is committed to bringing vision and effective leadership to the service and improvement of our community.

FOCUS

JLE dedicates volunteers and funds to new and existing projects that improve opportunities for women, children, and education.

CORE VALUES

- | | |
|----------------------------|----------------------|
| - Volunteerism/Voluntarism | - Dedication |
| - Leadership | - Generosity |
| - Community | - Collaboration |
| - Service | - Integrity |
| - Compassion | - Training/Mentoring |

GOALS

- Provide our members with training in voluntarism, leadership, fundraising and community issues
- Develop, maintain and adhere to consistent fiscal policies and fundraising activities
- Provide our members with hands-on opportunities to serve the community
- Develop and implement a marketing plan to heighten community awareness of JLE
- Increase commitment to membership growth and to membership satisfaction
- Improve JLE's understanding of community issues and needs

AJLI'S MISSION & VISION

AJLI MISSION

The Association of Junior Leagues International, Inc. (AJLI) is an organization of women committed to promoting voluntarism, developing the potential of women and improving communities through the effective action and leadership of trained volunteers. Its purpose is exclusively educational and charitable.

OUR VISION

The Junior League: Women Around the World as Catalysts for Lasting Community Change.

OUR COMMITMENT TO DIVERSITY AND INCLUSION

The Junior League welcomes all women who value our Mission. We are committed to inclusive environments of diverse individuals, organizations and communities.

OUR PURPOSE

The purpose of The Association of Junior League International, Inc. is to add value to its member Leagues in their fulfillment of The Junior League Mission.

THE POWER OF ASSOCIATION

Founded in 1901 by New Yorker and social activism pioneer Mary Harriman, the Junior Leagues are charitable nonprofit organizations of women, developed as civic leaders, making a demonstrable impact on their communities. In 1921 the Leagues joined forces as an association, which is today known as The Association of Junior Leagues International, Inc., in order to bolster their power and amplify their voice through shared knowledge and common causes.

True to their mission, today's League members work at the forefront of social reform, tackling the toughest and most critical issues of the day—including childhood nutrition and obesity, human trafficking, foster care, juvenile justice, teen self-esteem, cybercrimes, literacy and the environment, among others—for the purpose of enhancing the social, cultural and political fabric of civil society.

As a result of this work, The Junior League—and the more than 150,000 women in 291 communities in the United States, the United Kingdom, Canada and Mexico who comprise its ranks—has amassed an archive of tangible results and a reputation as thoughtful and influential change agents dedicated to the public good.

Today AJLI is a charitable nonprofit organization that provides continuity and support, guidance, and leadership development opportunities to its member Leagues. Through regional, national and international meetings, comprehensive resources, customized consultations, and League and member benefits, it supports its member Leagues in the fulfillment of The Junior League's Mission. AJLI is governed by a 19-member Board of Directors, which is accountable to the Leagues and comprised of women who are members of the Junior Leagues in their communities. The Association's New York City-based staff, under the leadership of the Executive Director, provides services to Leagues that support the established goals.

JUNIOR LEAGUE OF EVANSVILLE

OFFICE AND MAILING ADDRESS:

123 N.W. Fourth Street, Suite 422

Evansville, Indiana 47708

Email Address: jleoffice@courtbuilding.com

Website: www.juniorleagueofevansville.org

AJLI Website: www.ajli.org

OFFICE MANAGER:

Mrs. Melissa Wagner

JLE OFFICE HOURS:

FALL/WINTER/SPRING HOURS

September 1 through May 31

9 a.m. to 3 p.m. • Monday through Thursday

SUMMER HOURS

June 1 through August 31

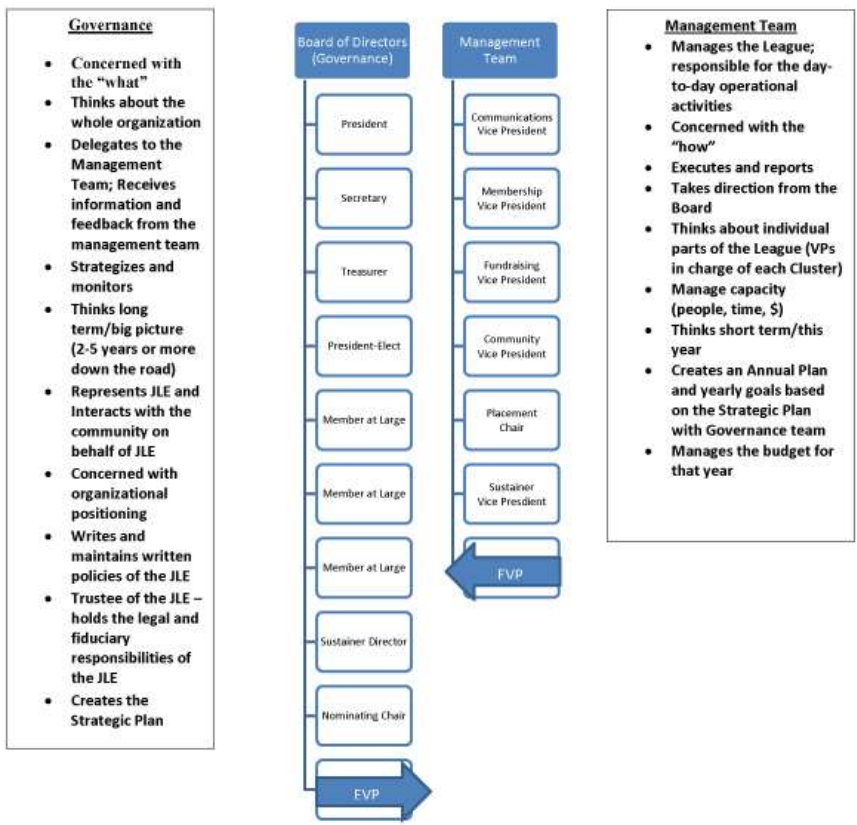
9 a.m. to 3 p.m. • Monday and Wednesday

Telephone: (812) 434-6710

If access to the office is needed after office hours, please contact
Melissa Wagner or a member of the Board of Directors.

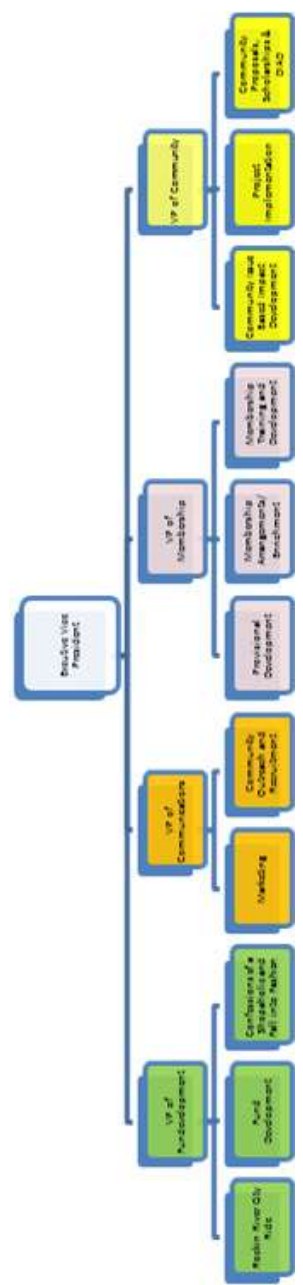
2016-2017 ORGANIZATIONAL CHART

Board of Directors & Management Team



2016-2017 ORGANIZATIONAL CHART

Cluster Structure



WHAT TO DO WHEN

YOU HAVE:

A change in name, address, or
telephone, or a change of
membership status:

To request a sabbatical:

An article for the LeagueLine:
A news release or publicity item
JLE Website Information

To request copying or office supplies:

An item for the meeting agenda:

A candidate for membership:

An idea for a program:

To attend a conference:

CONTACT:

Secretary
Dionne Blue
614-353-4379

Placement Advisor
See Page A-9

Marketing Chair
Meagan Brien
270-871-2835

Office Manager
Melissa Wagner
812-434-6710

President
Elissa Hewins
812-449-2803

Recruitment
Bobbi Preston
812-453-5773

Membership Arr.
Lauren Stone
812-457-6615
Lisa Vaughan
812-319-9330

Nominating/Placement
Lori Samples
812-430-5411

2016-2017 Calendar

August 2016

- 2 Board Meeting
- 13 Provisional Retreat
- 16 Membership Meeting
- 17 Management Team Meeting
- 24 Town Hall Meeting

September 2016

- 6 Board Meeting
- 8 Town Hall Meeting
- 13 Provisional Meeting
- 13 YWCA Fashion Project
- 18 Fall into Fashion
- 20 Membership Meeting
- 21 Management Team Meeting
- 23-24 Midwest Training Day

October 2016

- 4 Board Meeting
- 11 Grant Recipient's Breakfast
- 11 Provisional Meeting
- 18 Membership Meeting
- 19 Management Team Meeting

November 2016

- 1 Board Meeting
- 8 Provisional Meeting
- 15 Membership Meeting
- 15 Show Us What You Got
- 16 Management Team Meeting

December 2016

- 6 Board Meeting
- 7 Sustainer Jingle Mingle
- 13 Provisional Meeting
- 21 Management Team Meeting

January 2017

- 3 Board Meeting
- 10 Provisional Meeting
- 17 Membership Meeting
- 18 Management Team Meeting

February 2017

- 7 Board Meeting
- 14 Provisional Meeting
- 17 Membership Meeting
- 21 Management Team Meeting

March 2017

- 7 Board Meeting
- 14 Provisional Meeting
- 15 Management Team Meeting
- 21 Membership Meeting

April 2017

- 4 Board Meeting
- 11 Confessions of a Shopaholic
- 11 Provisional Meeting
- 18 Membership Meeting
- 19 Management Team Meeting
- TBD Community Volunteer Fair

May 2017

- 2 Board Meeting
- 5-6 Rockin River City Ride
- 16 Membership Meeting
- 17 Management Team Meeting
- TBD Sustainer's Luncheon

TBD=to be determined at a later date

Membership Meetings & Provisional Meetings

Social 5:30 p.m. • Business Meeting 6:00 p.m.

JUNIOR LEAGUE OF EVANSVILLE, INC.

BOARD OF DIRECTORS & STANDING COMMITTEES

2016-2017

BOARD OF DIRECTORS

Elissa Hewins, President
Holly Dunn Pendleton, President-Elect
Amy Lindsey, Treasurer
Dionne Blue, Secretary
Jana Shepherd, Executive Vice President
Kimberly Moman, Sustainer Director
Lori Samples, Nominating Chair
Kelley Ashby, Member at Large
Danielle Anslinger, Member at Large
Angie Schaffstein, Member at Large

MANAGEMENT TEAM

Heidi Young, VP Membership
Erika Qualls Barnet, VP Community
Molly Welch, VP Communications
Jana Shepherd, Acting VP Fund Development
Monica Owens, Sustainer Advisor
Molly Brost, Placement Chair

Treasurer's Committee = Ciavon Hartman

Secretary's Committee = Jana Horton

FUND DEVELOPMENT

Bike Ride

Jessica Stein
Stephanie Tenbarge
Stephanie Bonenberger
Mary Lawrence Childs
Starr Fryback
Sara Holman
Kendra Scheller
Lisa Vaughan
Debi Wilson

Fund Development

Jennifer Skinner

Jane Loehr

Claire Sutherby

Kirstin VanSickle

Fall into Fashion and Confessions of a Shopaholic

Abby Maravich

Christina Clark

Jenny Johnston

Wendy Lynch

MEMBERSHIP

Provisional Training

Holly Schaperjohn

Cassie Noah

Jessica Hoesli

Jennifer Miller

Sherri Miller

Natalie Rascher

Membership Arrangements/Training

Lauren Stone

Lisa Vaughan

Michelle Barron

Jessica Klosterman

Cheryl Martin

Nominating/Placement

Lori Samples, Chair

Molly Brost, Chair-Elect

Amber Anslinger

Sandy Bitter

Heather Garrison

Natalie O'Daniel

Ann Pendley

Mary Rokicki

COMMUNITY

Issue-Based Community Impact

Karese Johnson

Liz Hennessy

Amy Murray

Joy Shell

Project Implementation*Jill Mecklenborg*

Danielle Lowe

Marie Johnson-Metcalf

Erin Meyer

Penelope Pennington

DIAD Liaison

Katie Sims

Community Proposals/Scholarships*Traci Woodruff*

Lindsey Charles

Krista Weiberg

Sarah Woods

COMMUNICATIONS**Marketing***Meagan Brien*

Alex Deeley

Brooke Groenert

Allison Harrison

Linzee Smiley

Community Outreach/Recruitment*Bobbi Preston*

Starr Davis

Melody Littrell

Ashley Lee

Tynesha McGlown

Havi Troffkin

Placement Advisors 2016-2017

Lori Samples, Chair
Molly Brost, Chair-Elect
Amber Anslinger
Sandy Bitter
Heather Garrison
Natalie O'Daniel
Ann Pendley
Mary Rokicki

ADVISOR COMMITTEE ASSIGNMENTS

Committee:	Advisor:
Board of Directors	Lori Samples
Management Team, Treasurer's Committee	Molly Brost
Membership Arrangements/Training, Fall Into Fashion/Confessions of a Shopaholic	Amber Anslinger
Provisional Training, DIAD Liaison, Active Gold	Sandy Bitter
Fund Development, Community Proposals/Scholarships	Natalie O'Daniel
Bike Ride	Heather Garrison
Project Implementation, Community Issue Impact Development	Mary Rokicki
Marketing, Community Outreach Recruitment	Ann Pendley

JUNIOR LEAGUE OF EVANSVILLE

2016-2017 PROPOSED BUDGET

Names on Budget	
Membership Dues	30,619.47
Provisional Fees	500.00
Leagueline Advertising	2,500.00
Membership Merchandise Sales (Boutique)	265.00
Membership Enrichment Revenue - Just for Fun	50.00
Membership Arrangements Income	3,600.00
Sustainer Luncheon	2,625.00
Midwest Training Day	4,485.00
Underwriting	22,500.00
Funds from Investment Account	14,500.00
TOTAL SUPPORT REVENUES	81,644.47
FUNDRAISING REVENUE	
Bike Ride	42,000.00
Cookbook	700.00
Active Members Fund Development	7,360.00
Sustainer Members Fund Development	2,000.00
Confessions of a Shopaholic	8,000.00
Fall into Fashion	8,500.00
Santa's Workshop	1,500.00
TOTAL FUNDRAISING REVENUES	70,060.00
TOTAL REVENUE AND PUBLIC SUPPORT	151,704.47
EXPENSE - SUPPORT SERVICES	
Accounting fees	5,500.00
Annual dues billing	300.00
Bulk mail	350.00
Bank/electronic charges	300.00
Copier	250.00
Digital Cheetah/Website	8,417.00
Equipment purchases	500.00
Insurance	4,000.00
LeagueLine	5,400.00

JUNIOR LEAGUE OF EVANSVILLE

2016-2017 PROPOSED BUDGET

Office expenses	1,200.00
Office Manager Wages	16,123.47
Payroll taxes	1,240.00
Phone	540.00
Postage	400.00
Rent	4,500.00
Utilities	900.00
Historian expense (scrapbook)	100.00
Redbook	1,250.00
Marketing = \$13,700	
Bike Ride	4,000.00
Community Outreach/Recruitment	1,900.00
Confessions of a Shopaholic	700.00
Fall into Fashion	100.00
General Marketing	7,000.00
TOTAL SUPPORT SERVICES	64,970.47
EXPENSE - MEMBERSHIP SERVICES	
AJLI dues	12,620.00
Board Training	700.00
Board of Directors	700.00
Boutique merchandise	800.00
Conferences = \$12,003	
EVP Conference NYC	1,575.00
Chicago Fall Conference for 2	2,108.00
Raleigh ODI for 2	2,300.00
Tampa Winter Conference for 2	2,600.00
Twin Cities Annual Conference for 2	3,420.00
Secretary	25.00
Leadership Retreat	1,900.00
Membership Arrangements	6,400.00
Membership Awards	250.00
Membership Development/Provisional fees	400.00
Membership Enrichment/Just for Fun	100.00

JUNIOR LEAGUE OF EVANSVILLE

2016-2017 PROPOSED BUDGET

EXPENSE – MEMBERSHIP SERVICES	
Membership Recognition	200.00
Membership Recruitment	400.00
Midwest Training Day	4,500.00
Nominating/Placement	50.00
Strategic Planning Facilitator	1,200.00
Sustainer Luncheon	3,325.00
Sustainer Jingle Mingle	2,000.00
Scholarship fund to assist with dues payment	266.00
TOTAL MEMBERSHIP SERVICES	47,839.00
EXPENSE - COMMUNITY SERVICES	
Bike Ride	13,000.00
Community Impact Project	3,800.00
Community Proposals	150.00
Confessions of a Shopaholic	5,000.00
Fall into Fashion	75.00
Chamber Membership	350.00
Fund Development	50.00
Grants Breakfast	520.00
Helen Klammer Philp Award	500.00
Networking/Community	400.00
Quick Response Fund	0.00
Santa's Workshop	550.00
Small & DIAD Project Grants (2016/2017)	14,500.00
TOTAL COMMUNITY SERVICES	38,895.00
TOTAL EXPENSE	151,704.47
Temporarily Restricted Net Assets	
Interest Income	9,433.00
Scholarships	75,555.56
Investment Account	376,473.65
Sustainer's Annual Fund	7,728.00
Board restricted funds for Signature Project	55,282.00
Reserve Fund for Projects from Secondary Fundraisers	7,180.42

NEW MEMBER FORM

The Junior League of Evansville reaches out to all women, regardless of race, color, religion, natural origin, or the presence of disabilities, who demonstrate an interest in and commitment to voluntarism.

FORM SHOULD BE SENT TO:

**Junior League of Evansville
Membership Recruitment Committee
123 N.W. Fourth Street, Suite 422
Evansville, Indiana 47708**

NEW MEMBER INFORMATION

Name: _____
Last First M.I. Nickname

Date of Birth: ____ / ____ / ____

Maiden Name: _____

Husband's Name (if applicable): _____

Permanent Address: _____
Street

City State ZIP

Home Phone: () _____

Work Phone: () _____

Will the new member be able to participate in the Junior League of Evansville
Provisional Course in 2017/18? ☐ Yes ☐ No

MEMBERSHIP INFORMATION

A resident member of the Junior League shall be at least 21 years of age.

A member in good standing with the Junior League of Evansville is eligible to transfer to any other Junior League.

Provisional information meetings will be held annually to inform potential members about League membership.

New members shall be admitted to Provisional membership by a majority vote of the Board of Directors.

PROVISIONAL REQUIREMENTS

2016-2017

I. FINANCIAL OBLIGATIONS

- A. Provisional Fee \$20.00
- B. Annual Dues \$133.00
- C. Cookbook Commitment \$40.00
- D. Purchase \$50 of Rockin River City Ride registrations or Rockin RUN tickets.
- E. Purchase \$60 in ticket purchase to resale or use in any combination from the following events: Fall into Fashion, Santa's Workshop, Rockin River City Ride and/or Cookbooks.

II. PROVISIONAL MEETINGS

- A. Attend all Provisional meetings from September through April (one meeting per month) held the 2nd Tuesday of the month.
- B. Must have four points from meeting attendance. Three points must come from Junior League General Membership Meetings. One point can be from a Mini-Meeting or Training Day by April 1. The General Membership Meeting is held on the 3rd Tuesday of the month.

III. PROVISIONAL TRAINING OPPORTUNITIES

- A. Attending the Provisional Retreat;
- B. Attending 6 Provisional Course Sessions;
- C. Attending three General Membership meetings by April 1 and one Mini-Meeting or Training Day event;
- D. Work four Done in a Day hours;
- E. Work two Community Issue Based hours;
- F. Work four hours at the Rockin River City Ride;
- G. Purchase \$50 in Rockin River City Ride or Rockin Run registration and/or tickets;
- H Purchase \$40 JLE Once Upon a Time Cookbooks at \$20 each
- I Purchase \$60 in any combination from the following events: Fall into Fashion, Confessions of a Shopaholic or additional Rockin Ride tickets.